



REG. IMP. MN
00141030205 ITALY

A&T EUROPE SPA
46043 Castiglione della Pescaia (MI)
Tel. 0376 94261 - Fax 0376 631482
E-mail: ufficio.technical@spacastiglione.it

**TECNOLOGIA PER C.A.
POSA IN OPERA SU BSF E SK**

DRAW NUMBER
1500191

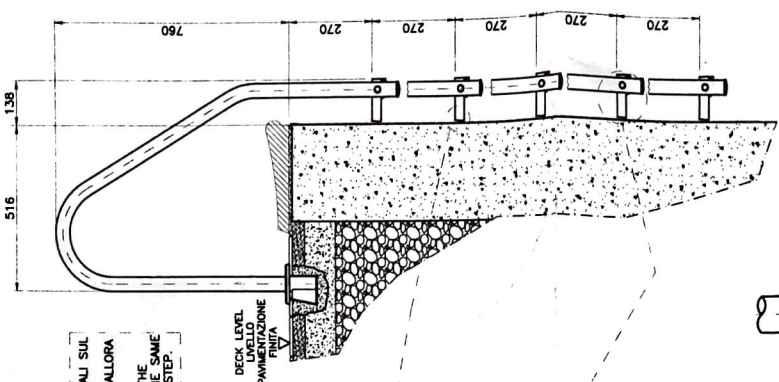
SCALA
1:15

13/01/09
DATE
COMENTALE G.
DRAWN
CHECKED

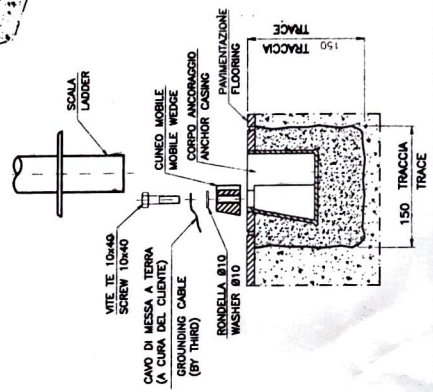
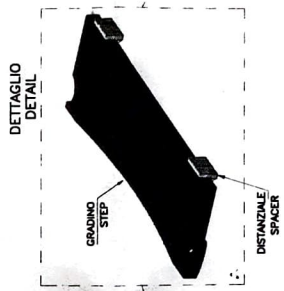
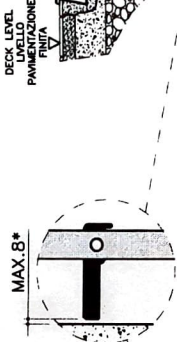
UNIFICATO SEZ. SK CON BSF 05-08-08 BERTAGNA
01 CORRETTO CARTIGLIO E REV. GENERALE 25-09-08 BERTAGNA
02 CORRETTO STILE DI STAMPA

RIPRODUZIONE VIETATA REPRODUCTION INTERDITE

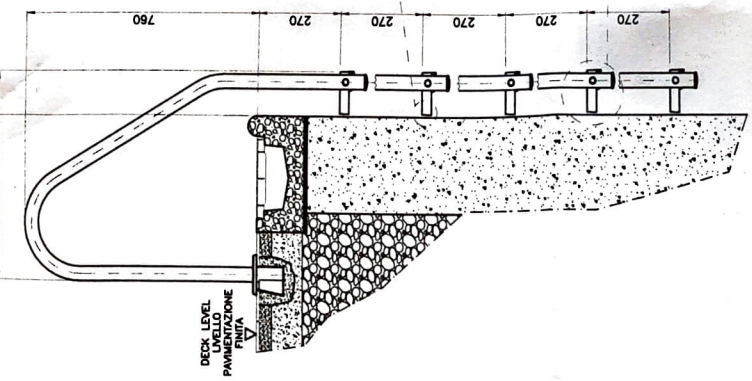
VISTA IN SEZ. SK



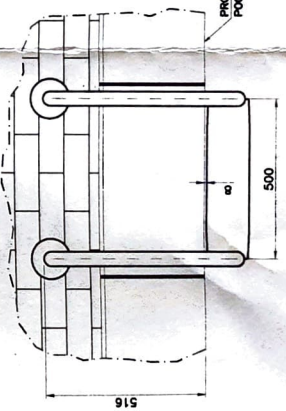
(*) PER INSPIETARE QUESTA GUIDA POSIZIONARE I DISTANZIALI SUL CANTO SUPERIORE DELLA PARETE. SE I GRADINI SONO TUTTI A DISTANZE UGUALI DALLA PARETE, ALLORA INSTALLARLO SULL'ULTIMO GRADINO.
(**) TO OBSERVE THIS LIMITATION, PLACE THE SPACERS ON THE FURTHEST STEP FROM THE WALL. IF THE STEPS ARE AT THE SAME DISTANCE FROM THE WALL, PLACE THE SPACERS ON LAST STEP.



VISTA IN SEZ. BSF



VISTA IN PANTA SK



VISTA IN PANTA BSF

